



## **MARVEL** Model number:

**4 beds • 2 baths • 1475 sq.ft. • 28' width • 56' depth**

Our home building facilities invest in continuous product and process improvements. Plans, dimensions, features, materials, specifications and availability are subject to change without notice or obligation. Renderings and floor plans are representative likenesses of our homes and may differ from the actual homes. We invite you to tour a Home Center near you and inspect the highest value in quality housing available or call (256) 820-0510 to speak with a Home Consultant. Copyright 2017, CMH. All rights reserved.

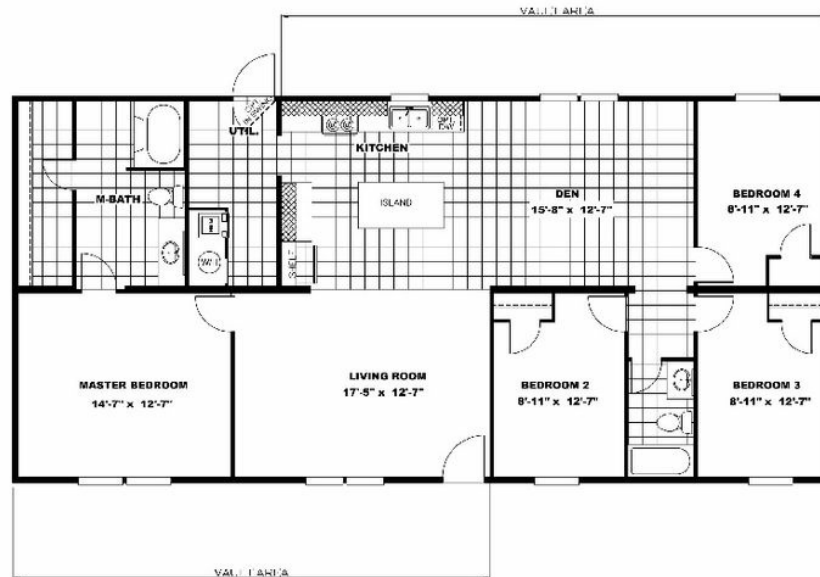
<https://www.truvaluealexandria.com>

## TRU VALUE HOMES

6962 HIGHWAY 431  
ALEXANDRIA, AL 36250

Monday - Thursday: 9am to 6pm  
Friday: 9am to 6pm  
Saturday: 9am to 5pm  
Sunday: Closed

(256) 820-0510



## MARVEL Model number:

**4 beds • 2 baths • 1475 sq.ft. • 28' width • 56' depth**

Our home building facilities invest in continuous product and process improvements. Plans, dimensions, features, materials, specifications and availability are subject to change without notice or obligation. Renderings and floor plans are representative likenesses of our homes and may differ from the actual homes. We invite you to tour a Home Center near you and inspect the highest value in quality housing available or call (256) 820-0510 to speak with a Home Consultant. Copyright 2017, CMH. All rights reserved.

<https://www.truvaluealexandria.com>

## TRU VALUE HOMES

6962 HIGHWAY 431  
ALEXANDRIA, AL 36250

Monday - Thursday: 9am to 6pm  
Friday: 9am to 6pm  
Saturday: 9am to 5pm  
Sunday: Closed

(256) 820-0510